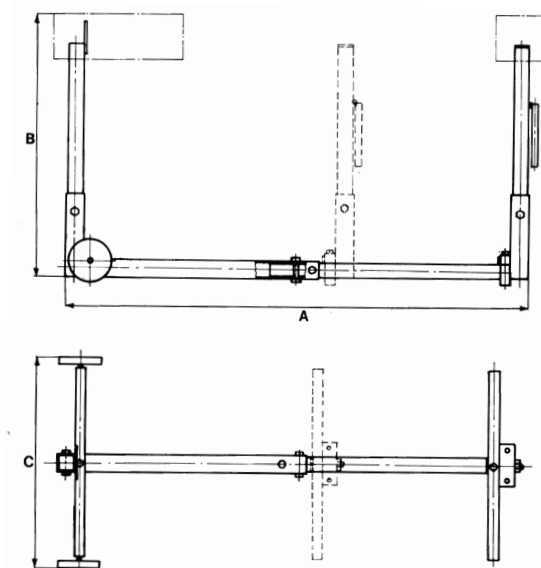
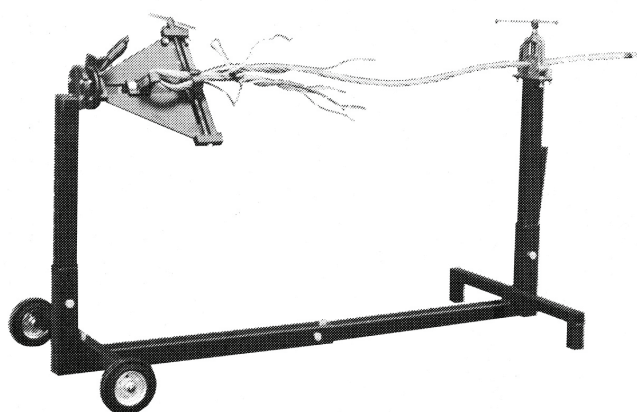


Splicing stands

Part no.	A max. mm	A min. mm	B max. mm	B min. mm	C mm	Weight kg	For wire vise
E160	2150	1335	1100	920	1000	70.0	E128 / E134-M / E134-B
E170	3000	2220	1290	1120	1100	120.0	E250 / E250M

Stand without wire vise and wirehold.



Wire splicing stand with motor

Complete with wire vise · Wire hold and splicing stand

Part no.	Weight kg	Description				
E200	142.0	E134-M	+	E150	+	E160

