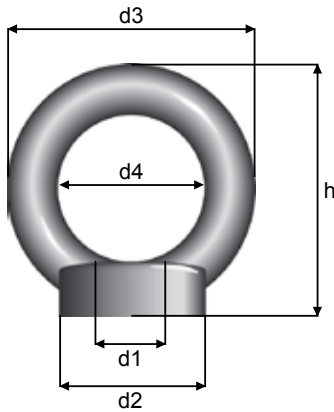


Eye nuts



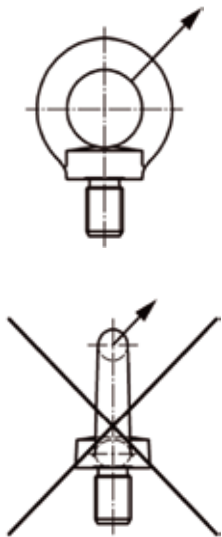
Din 582



Part no.	WLL kg	Thread d1	Pitch mm	Body dia d2 mm	Eye dia. outside d3 mm	Eye dia. inside d4 mm	Height h mm
LØM-M06	70	M6	1.00	20	36	20	36
LØM-M08	140	M8	1.25	20	36	20	36
LØM-M10	230	M10	1.50	25	45	25	45
LØM-M12	340	M12	1.75	30	54	30	53
LØM-M16	700	M16	2.00	35	63	35	62
LØM-M20	1200	M20	2.50	40	72	40	71
LØM-M24	1800	M24	3.00	50	90	50	90
LØM-M30	3200	M30	3.50	65	108	60	109
LØM-M36	4600	M36	4.00	75	126	70	128

Approved for lifting.

Instructions for use of lifting eye bolts



Thread	Lifting capacity in kg. per eye bolt		
	F1	F2	F3
M06	70	50	35
M08	140	100	70
M10	230	170	115
M12	340	240	170
M16	700	500	350
M20	1200	860	600
M24	1800	1290	900
M30	3200	2300	1600
M36	4600	3300	2300

The capacity specified in the table (F2 and F3) applies up to an inclination angle of 45°.